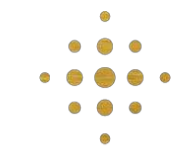


Crestron & Rhombus

Technology



Finishes



R H O M B U S
EUROPE

Inox



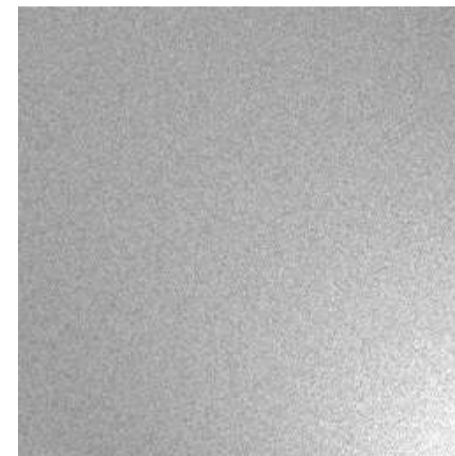
IN-BRILLANTE



IN-SATINADO-HL



IN-VIBRATION



IN-BEAD BLASTED



IN-SATINADO-N4



IN-ÁCIDO

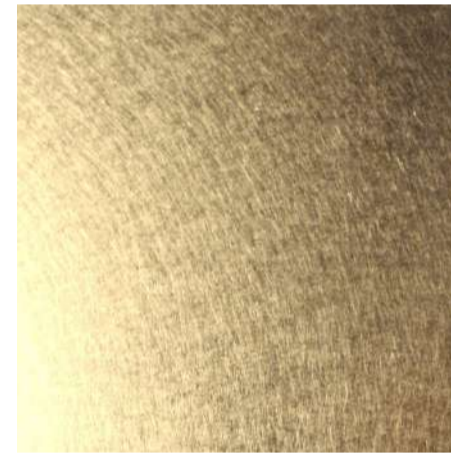
Latón



IN-BRILLANTE



IN-SATINADO-HL



IN-VIBRATION



IN-BEAD BLASTED

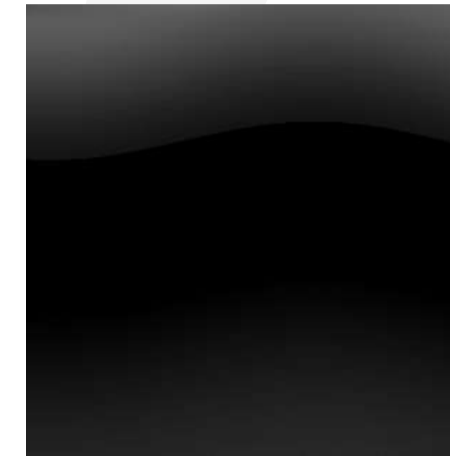


IN-SATINADO-N4



IN-ÁCIDO

Dark



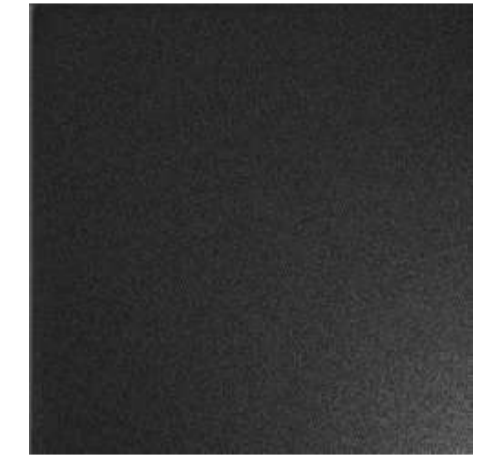
IN-BRILLANTE



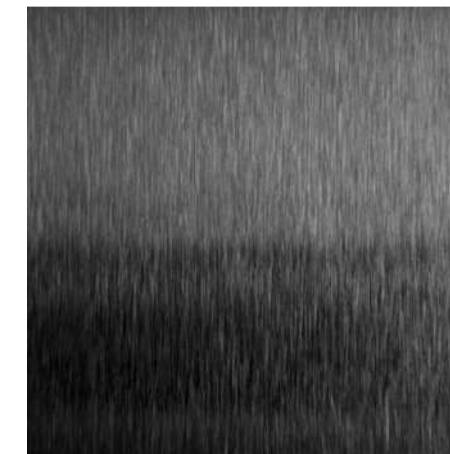
IN-SATINADO-HL



IN-VIBRATION



IN-BEAD BLASTED



IN-SATINADO-N4



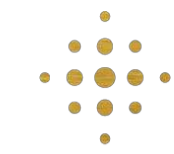
IN-ÁCIDO

Notes

All of the above finishes are Antifingerprint treated. We also match custom finishes when not in our catalogue. Most of the finishes do not change over time; however some finishes can change over time based on handling and environment. All of the above finishes can be provided in standard round push buttons, square push buttons or toggle.

Mechanism of finishes can be matched to plate finishes. All plates should be cleaned with a dry dust pad and no cleaning product should ever be used.

Finishes



R H O M B U S
EUROPE

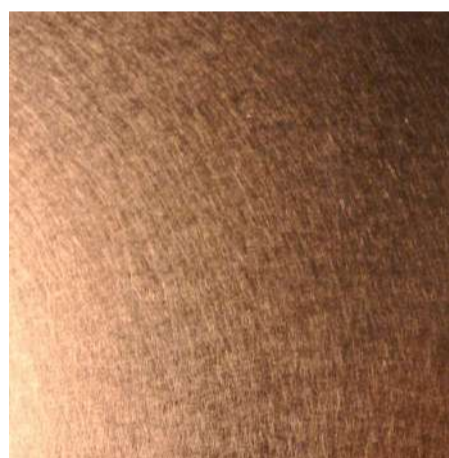
Cobre



IN-BRILLANTE



IN-SATINADO-HL



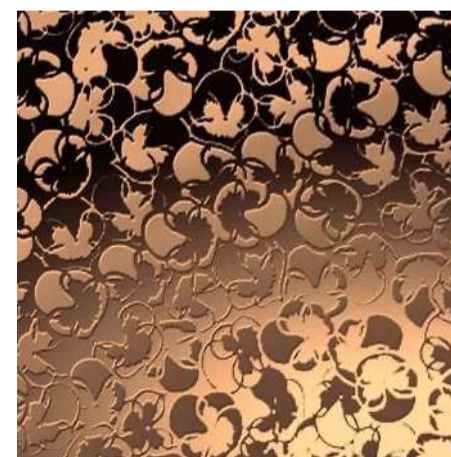
IN-VIBRATION



IN-BEAD BLASTED

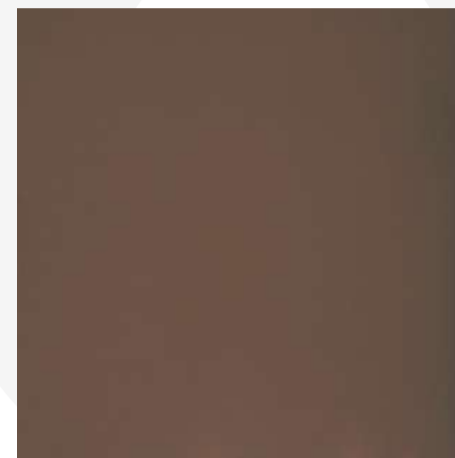


IN-SATINADO-N4



IN-ÁCIDO

Bronce



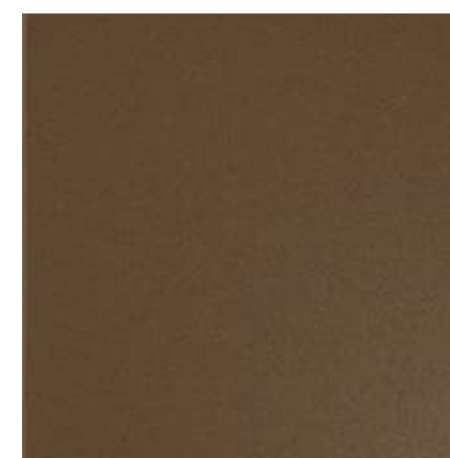
IN-BRILLANTE



IN-SATINADO-HL



IN-VIBRATION



IN-BEAD BLASTED



IN-SATINADO-N4

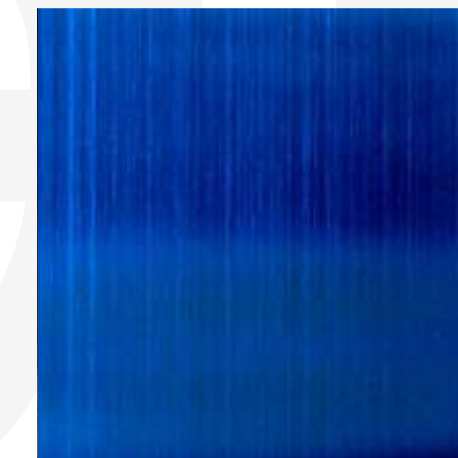


IN-ÁCIDO

Azul



IN-BRILLANTE



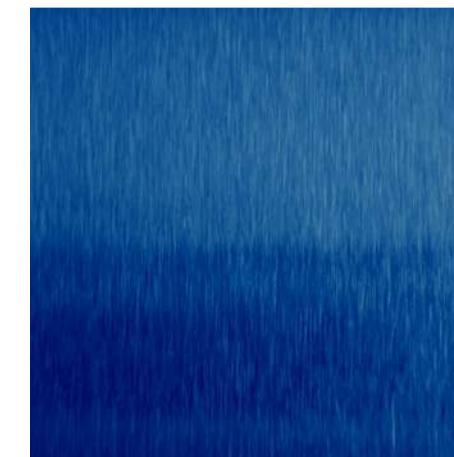
IN-SATINADO-HL



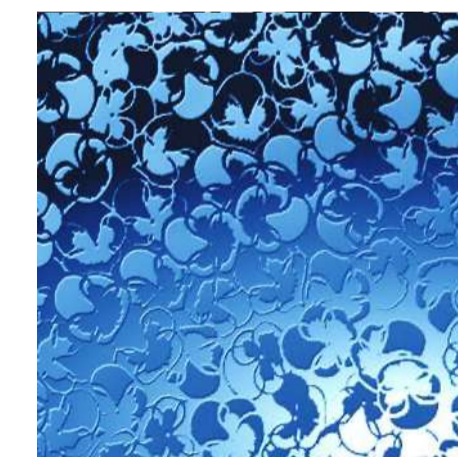
IN-VIBRATION



IN-BEAD BLASTED



IN-SATINADO-N4



IN-ÁCIDO

Notes

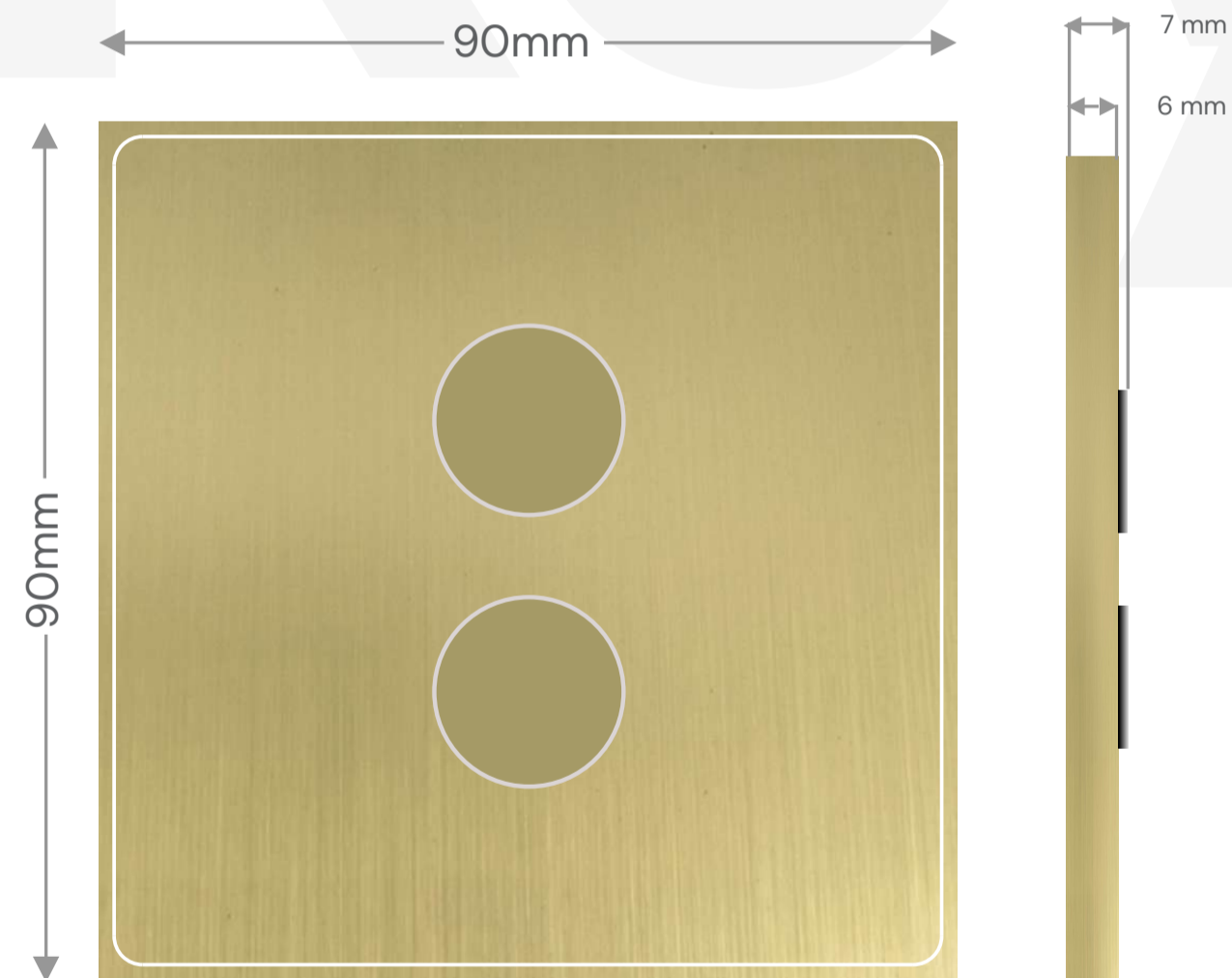
All of the above finishes are Antifingerprint treated. We also match custom finishes when not in our catalogue. Most of the finishes do not change over time; however some finishes can change over time based on handling and environment. All of the above finishes can be provided in standard round push buttons, square push buttons or toggle.

Mechanism of finishes can be matched to plate finishes. All plates should be cleaned with a dry dust pad and no cleaning product should ever be used.

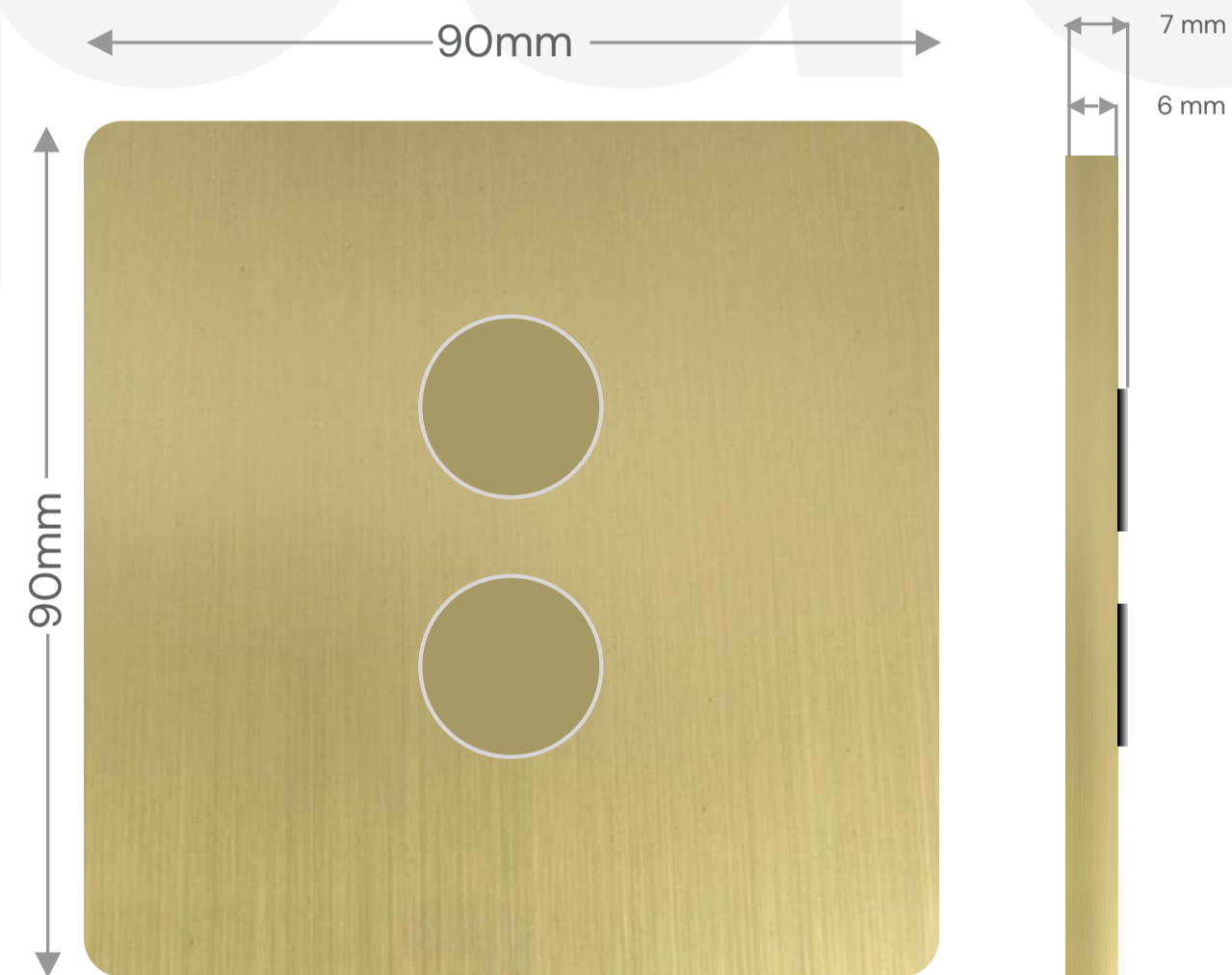
Faceplates

Unlimited combinations and collections of Keypads and accessories.
Customise the configurations that deliver a home away from home.

Griffin Range Squared corners



Monoblock Range Rounded corners



Notes

Our keypads are design to mount with standard BS, EU and Italian backbox electrical standard . We also provide customized products, frames, backboxes for specific accessories and projects.

Buttons can be provided in round and square option in 15mm / 12mm / 8mm sizes. Toggle buttons have reduced combination because of the mechanical parts.

Kindly get in touch with us for customized products and solutions

Technical

Cresnet

Crestron – Cresnet Chipset

All buttons are mapped to a Digital port which corresponds to their physical position:

e.g. Button 1 is mapped to Digital port 1, Button 2 is mapped to Digital port 2 and so on.

Button state is sent via the D|"Button Index"|"State" command.

e.g. Keypad sends:

D|1|ON if Button 1 is being pressed.

D|1|OFF if Button 1 is being released.

2 LEDs (Blue which is ON by default, and Green) are assigned to each button.

LED color is changed via the Digital ON/OFF command.

D|1|ON command turns Blue LED OFF and turn Green LED ON.

D|1|OFF command turns Blue LED ON and turn Green LED OFF.

Dry contact

Crestron C2NI Interface Module

Power:

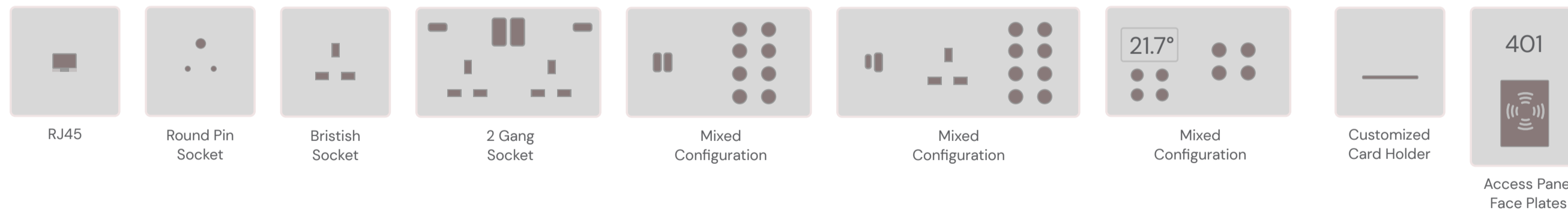
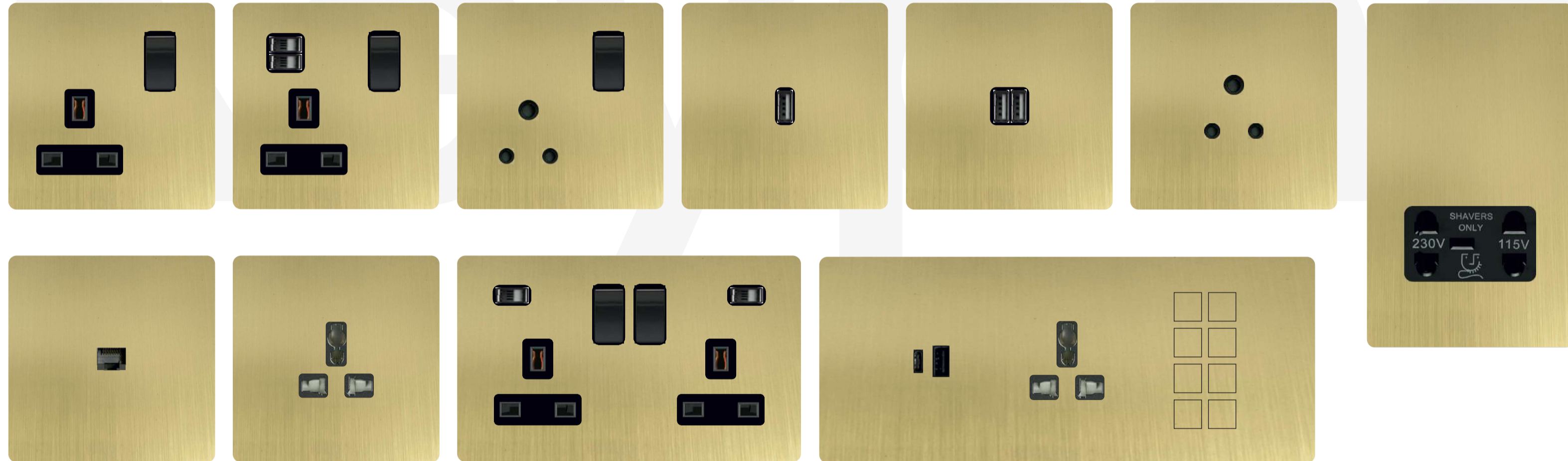
Voltage for LEDs 9–15 (nominal 12) Vdc

Current per LED ~1mA

Potential free buttons with common connection

Accessories

Multiple Options



Notes

Mounting Requirements: All the above configuration can go in a standard UK square backbox (75mm x 75mm x 35mm).

Buttons can be provided in round and Square option with varying sizes.

Buttons can be provided in 15mm / 12mm / 8mm

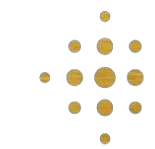
4 Toggle buttons can be provided as a maximum in a toggle configuration in a 1-Gang UK backbox.

Toggle buttons have reduced combination because of the mechanical parts.

We also provide customized products, frames, backboxes for specific accessories and projects.

LED, Text, Font and icons can be customised.

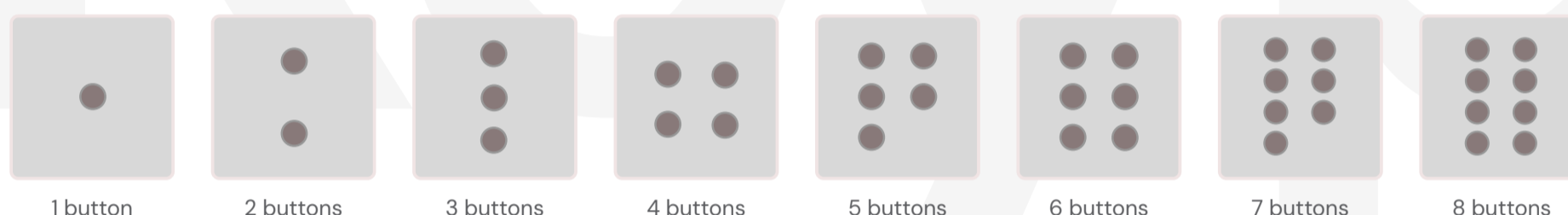
Keypads are compatible with DRYCONTACT / MODBUS / CRESNET / KNX



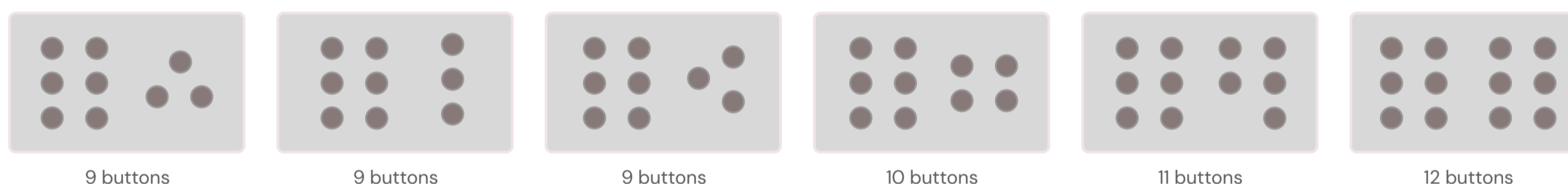
British Keypads & accessories

Unlimited combinations and collections of Keypads and accessories.
Customize the configurations that deliver a home away from home.

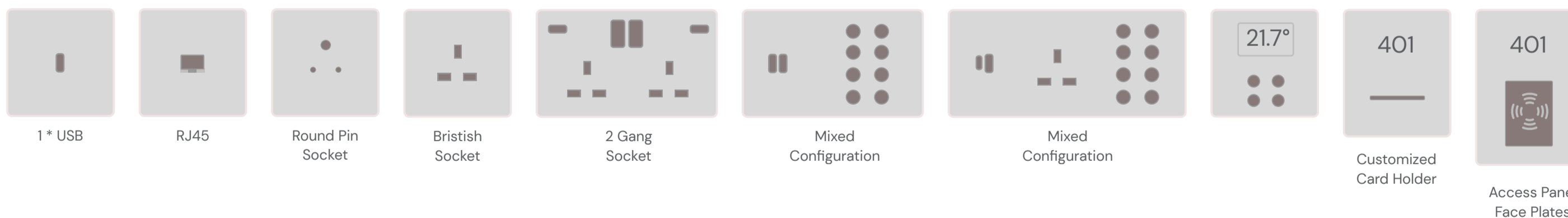
1 Gang



2 Gang



Accessories

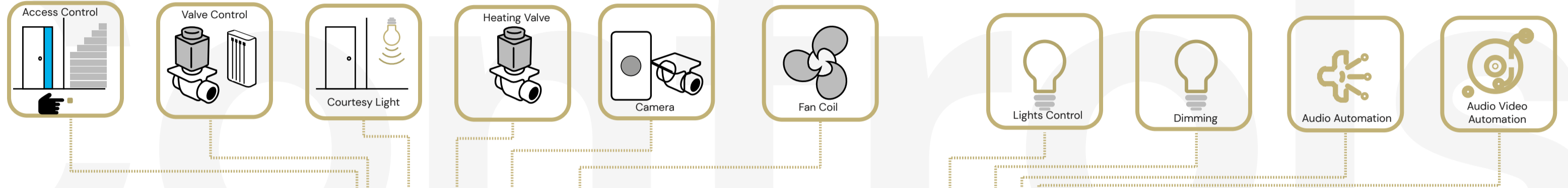


Notes:

All the above configuration are design to mount with standard UK backbox between 1 Gang, 2 Gang and 3 Gang. We also provide customized backbox for specific accessories.
Buttons can be provided in round and square option in 15mm / 12mm / 8mm sizes. Toggle buttons have reduced combination because of the mechanical parts.
Keypads compatible with DRYCONTACT/MODBUS/CRESNET/KNX.

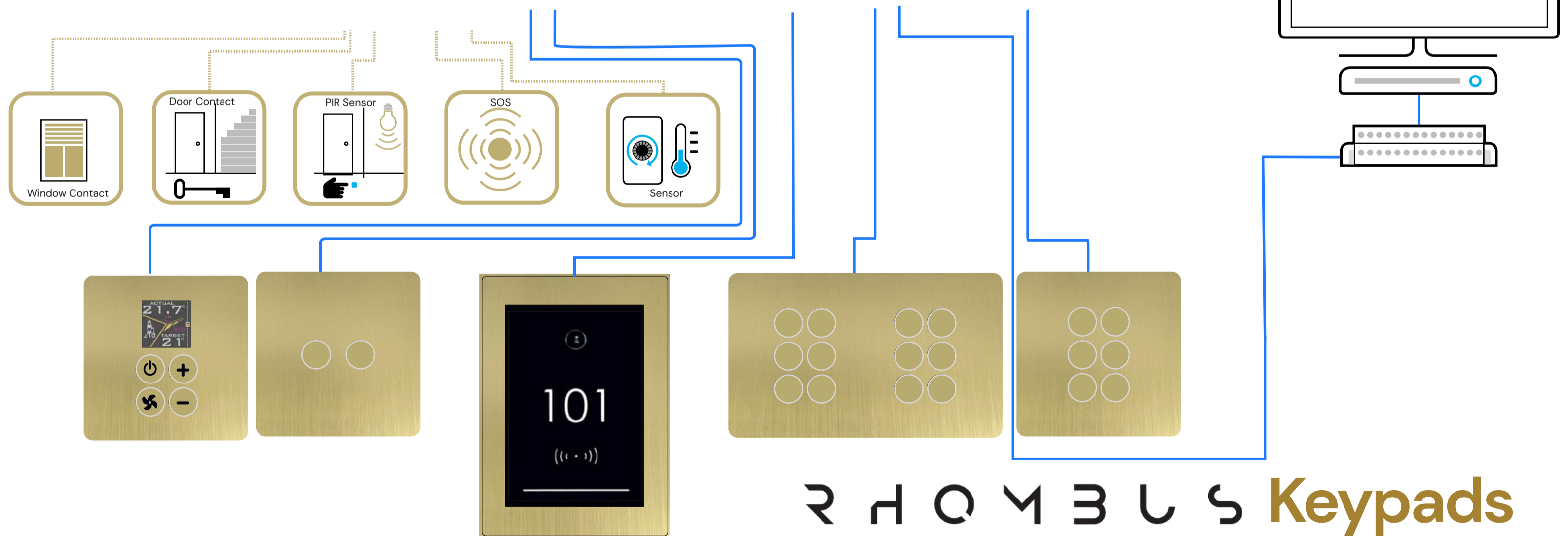
Automation

Multiple Options



CRESTRON

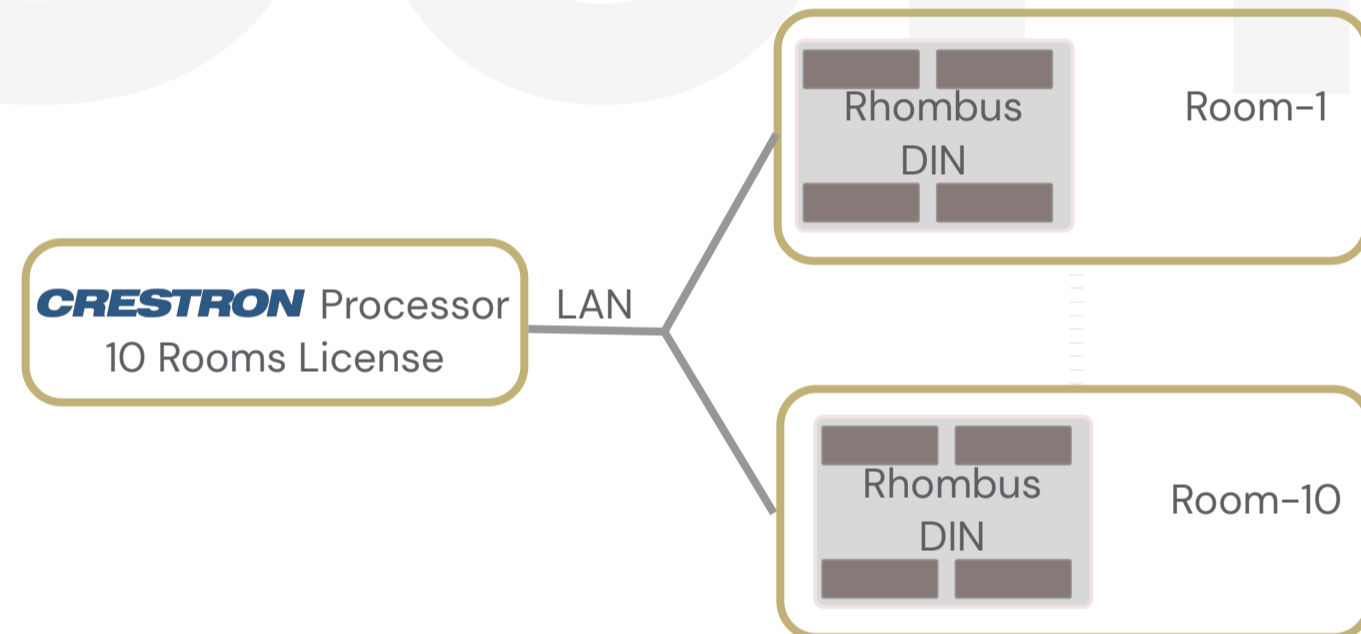
Cresnet/C2NI



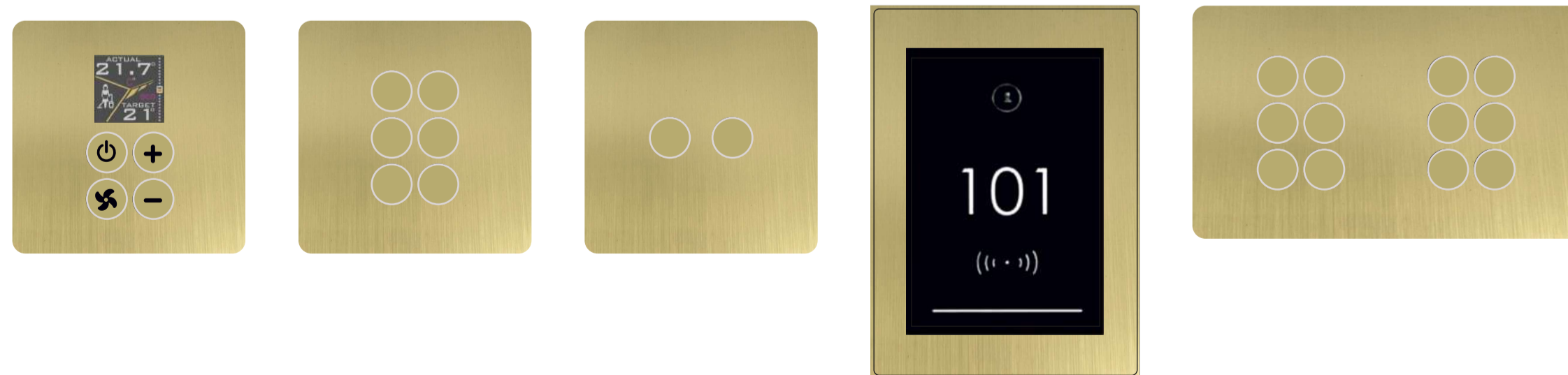
R H O M B U S **Keypads**
EUROPE

Hospitality

Multiple Options



- Rhombus DIN module all in one solution
- Mix and match with Crestron products
- Multiple combination of IN/OUT ports
- 4 scaling factors 8, 12, 16 Relays
- Direct 2x RGBW, to connect Color LED stripes
- Daisy chain of other DIN products for expansion
- Keypads – Modbus/Cresnet/KNX/Dry Contact
- Dry Contact input for DND and MUR service



Rhombus

DIN Modules



Multiple Combinations

Rhombus DIN modules works seamlessly with Crestron RMC4

8 Digital Inputs, 8 Digital Outputs

8 Digital Inputs, 8 Relay Outputs

12 Digital Inputs, 12 Digital Outputs

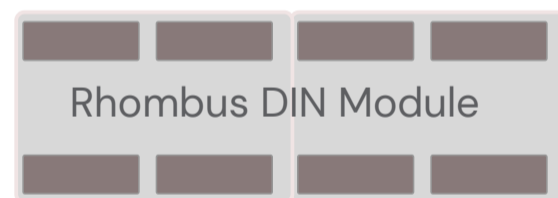
12 Digital Inputs, 12 Analog Outputs

12 Pulse Width Module regulated Outputs

16 Digital Inputs, 16 Digital Outputs

16 Digital Inputs, 16 Analog Outputs

16 Temperature Inputs, 16 Digital Outputs





We manufacture beautiful custom switches and sockets that express the individuality of your interior.

Rhombus Europe offers complete range of contemporary electrical accessories available in a variety of finishes to suit the demands of a rapidly changing design market.

**Varna
Bulgaria**

6 Yan Huniyadi
Blvd., 9000
info@rhombus-europe.com

**Dubai
UAE**

Office# 407
Al Qusais Plaza
Damascus Street
mea@rhombus-europe.com

